

# TREES FOR LURË

Non-governmental, non-profit organization founded in 2019 with mission to help with reforestation of the most damaged areas of the Lurë-Dejës Mt. National Park

# ABOUT US

TREES FOR LURË IS A NON-GOVERNMENTAL, NON-PROFIT ORGANIZATION FOUNDED IN 2019 WITH A MISSION TO HELP WITH REFORESTATION OF THE MOST DAMAGED AREAS OF THE LURË-DEJËS MT. NATIONAL PARK. IT IMPLEMENTS TWO MAIN PROJECTS, THE REFORESTATION AND TREE NURSERY.

THE REFORESTATION PROJECT IS **90% EXECUTED BY THE LOCAL TEAM**, WORKERS WHO LIVE IN LURË E VJETËR, FUSHË-LURË, BORIE-LURË, GUR-LURË, ETC. VOLUNTEERS, PARTNERS AND SCHOOLS ARE USUALLY INVITED ONLY DURING WEEKENDS TO SYMBOLICALLY PLANT THE REMAINING 10% OF THE SEEDLINGS.

THE PROJECT IS DIVIDED INTO TWO PHASES, THE FIRST PHASE CONCERNS THE PREPARATION OF THE TERRAIN, THE OPENING OF THE HOLES WITH SPECIFIC DIMENSIONS AND WITHOUT A SCHEME, IN ACCORDANCE WITH THE PROJECT SUBMITTED AND APPROVED BY THE RESPONSIBLE INSTITUTIONS - AKZM AND ADZM DIBËR; AS WELL AS THE SECOND PHASE WHERE SEEDLINGS ARE PLANTED.

THE TEAM CONSISTS OF **60% MEN AND 40% WOMEN**, USUALLY WHOLE FAMILIES PARTICIPATE DURING OUR OPERATIONS.

TREES FOR LURE NURSERY IS LOCATED IN FUSHË-LURË AT 1,100M ABOVE SEA LEVEL AND HAS A PRODUCTION CAPACITY OF 20,000 SEEDLINGS PER YEAR. IT PROVIDES ADDITIONAL JOB OPPORTUNITIES FOR LOCAL COMMUNITY. **PINUS NIGRA, PINUS PEUCE** AND **ABIES ALBA** ARE CURRENTLY GROWING IN THE NURSERY, THE SEEDS OF WHICH WERE COLLECTED IN 2021-2022 WITHIN THE "LURË-DEJËS MT." NATIONAL PARK.

**THE SEEDLINGS GROWN IN THIS NURSERY ARE AUTHENTIC** AND FULFILL ALL REQUIREMENTS FOR PLANTING IN THE HIGHEST PROTECTED AREAS OF THE LURË-DEJËS MT. NATIONAL PARK.

**Do you have a question, suggestion or you just want to say hello?**

**Give us a shout on Instagram, Facebook, or sending an e-mail will work just fine as well...**

**[hello@treesforlure.org](mailto:hello@treesforlure.org)**

**Contact us!**



Team: Pavel Kunc, Anisa (Kulla) Coniku, Ersan Karameto, Joreld Dhamo, Mirjana Pali, Olgerta Puta, Gentjana Lasku

# 2021 - 2023 KEY FACTS



WE PLANTED **22 793 TREES** IN  
AN AREA OF 15.22 HA

**SURVIVAL RATE**  
**81.33%** (2021-2022)

**€30,834**  
ECONOMIC IMPACT

## COMMUNITY

|      | WORKERS   | Women     | Youth    | Volunteers |
|------|-----------|-----------|----------|------------|
| 2021 | <b>8</b>  | <b>2</b>  | <b>1</b> | <b>45</b>  |
| 2022 | <b>29</b> | <b>11</b> | <b>3</b> | <b>32</b>  |
| 2023 | <b>35</b> | <b>14</b> | <b>6</b> | <b>47</b>  |

**COST  
PER  
1 TREE**



SAPLING COST = €0.6

PLANTING COST = €1.43

**TOTAL COST = €2.03**

# REFORESTATION

Number of trees

22,793 trees

Reforested area

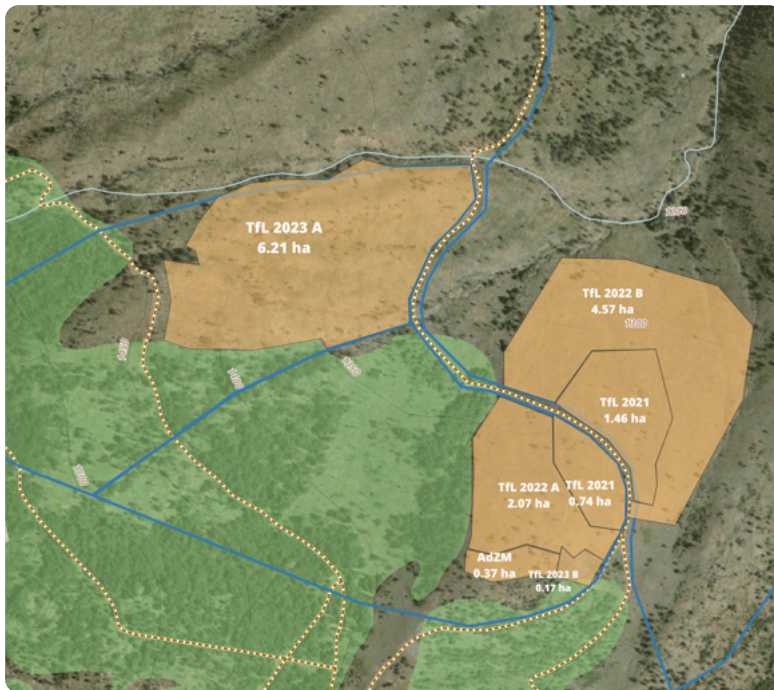
15.22 ha

Community involved

35 people/14 women

Duration

2021-2023



**SURVIVAL RATE**  
**81.33%** (2021-2022)

Our main focus is reforestation with a goal to help rehabilitate 500ha of damaged forests in the Lurë-Dejës Mt. National Park.

We rely heavily on the local community to execute our operations which creates a strong relationship towards our projects within the community and allows us to contribute substantially to the local economy. This approach is a main difference from other organizations and creates long-lasting results.

# NURSERY

Number of trees/Capacity

10,061 /20,000 trees

Tree species

Pinus nigra, Pinus Peuce\*, Abies alba

Location

1,100 m above sea level

Duration

2022-2023



## TECHNOLOGY AND REFORESTATION

*the monitoring system measures the level of soil moisture, temperature, lighting level, the charging battery system from the solar panel ect.*

Trees for Lurë nursery is located in the village of Fushë-Lurë, in the heart of Lurë-Dejës Mt. National Park.

It is a critical component of our reforestation efforts and provides sustainable production of the plating material. At 1,100 a.s.m.l., it is one of the highest tree nurseries in the Balkan peninsula. It produces 20,000 saplings of Pinus nigra, Pinus peuce and Abies alba (combined) per year.

*\*Arnen (Pinus peuce) endangered species*

# COMMUNITY

Involvement

35 people/14 women

School events

3 (43 kids)

Local impact

19 working families

Economic impact (2021-2023)

€30,834



From **8 workers** (2021)  
to **35 workers** (2023)

One of the main goals of the reforestation project in Lurë is to involve the local vulnerable community by offering them seasonal work as well as encouraging/promoting gender equality by working with women.

We rely heavily on the local community to execute our operations. The volunteers we engage in the projects are mostly schools and universities, by bringing kids/ students to Lurë to learn more about all phases of reforestation.



# PARTNERS

WE ARE PROUD TO WORK WITH INCREDIBLE PARTNERS SUPPORTING OUR MISSION TO PLANT TREES, SUPPORT LOCAL COMMUNITIES AND BUILD SUSTAINABLE LONG-TERM REFORESTATION PROJECTS. OUR PARTNERS WORK WITH US IN VARIOUS WAYS, FROM FINANCIAL AND OTHER DONATIONS TO LONG-TERM PARTNERSHIPS AND COOPERATION.

IF YOU ARE INTERESTED IN WORKING WITH US, PLEASE DON'T HESITATE TO CONTACT US.

## **risr/**

**€30,113**

RIRS/, FORMERLY FRY-IT, LTD., IS UK BASED BUSINESS, PROVIDING ON-LINE MEDICAL EXAM SYSTEMS FOR UNIVERSITIES IN EUROPE, CANADA, AUSTRALIA AND NEW ZEALAND.

RISR/ HAS BEEN SUPPORTING US EVERY YEAR SINCE 2021 AS PART OF THEIR INVESTMENT INTO THE ENVIRONMENT AND SUSTAINABILITY.



## **ONETREEPLANTED**

**\$10,000**

ONE TREE PLANTED IS A GLOBAL, US BASED NON-PROFIT ORGANIZATION ON A MISSION TO MAKE IT SIMPLE FOR ANYONE TO HELP THE ENVIRONMENT BY PLANTING TREES.

WE ARE WORKING TOGETHER SINCE 2023 AND ONE TREE PLANTED SUPPORTS US ON THE CO-FOUNDING BASIS OF \$1 PER TREE PLANTED.



**€10,000**

BESTSELLER IS THE BIGGEST FURNITURE PRODUCER AND SELLER IN ALBANIA.

WE ARE WORKING TOGETHER SINCE SINCE 2023 AND BESTSELLER HAVE COMMITTED TO A LONG TERM SUPPORT OF OUR REFORESTATION PROJECTS. BESTSELLER IS PROVIDING US WITH FINANCIAL SUPPORT AS WELL AS PROMOTING OUR PROJECTS ON THEIR WEBSITE AND SOCIAL MEDIA CHANNELS.



## **Shirt-King**

**€9,575**

HELDENWERBUNG GMBH (SHIRT-KING, BUTTON.KING) BASED IN BERLIN, GERMANY IS MANUFACTURER AND SELLER OF HIGH QUALITY CUSTOM MADE T-SHIRTS AND OTHER PROMOTIONAL ITEMS.

WE ARE WORKING TOGETHER SINCE 2022, THEY SUPPORT US BY DONATING 1 TREE OF THEIR REVENUE FOR EACH ORDER THEY RECEIVE ON THEIR WEBSITES SHIRT-KING.DE AND BUTTON.KING.DE.



### **Materials for nursery**

A COMPANY WITH A LONG EXPERIENCE IN THE FIELD OF PRODUCTION OF PLASTIC MATERIALS, USING MODERN TECHNOLOGY AND PROFESSIONAL STAFF. WE COOPERATE SINCE 2022, AND BELLPLAST PROVIDES US THE PLASTIC TO WEAR/REPAIR OUR NURSERY.



## **innospace™**

### **Office space**

A CREATIVE WORKING ENVIRONMENT LOCATED IN BLOKU, THE HEART OF ENTERTAINMENT DISTRICT WHERE YOU'LL BE STEPS AWAY FROM GREAT LUNCH LOCATIONS, FANCY COFFEE PLACES AND COOL COCKTAIL BARS. WE HAVE BUILT A STATE-OF-THE-ART SPACE, WHERE YOU CAN FOCUS ON YOUR NEXT BIG PROJECT.

WE ARE WORKING TOGETHER SINCE 2023, THEY SUPPORT US BY PROVIDING US WITH OFFICE SPACE AND MEETING ROOMS IN THEIR WONDERFUL CO-WORKING SPACE IN TIRANA.



**Do you want to become a partner?  
Contact us!**

**Visit [treesforlure.org](https://treesforlure.org) for more info**



Trees for Lurë  
Pjetër Bogdani street, No 10/5, Apt 28, 7th Floor,  
1019, Tirana, Albania

NIPT: M02208452W

+355 68 822 5132  
hello@treesforlure.org  
treesforlure.org